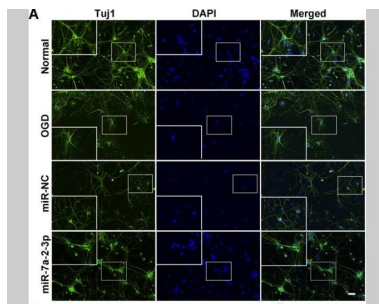


FITC* Goat Anti Rabbit IgG(H+L)

Catalog No :	IM20004
Reactivity :	Rabbit
Applications :	WB; IHC; IF/ICC; ELISA
Formulation :	Liquid in PBS containing 50% glycerol, 0.5% BSA and 0.02% sodium azide.
Source :	Goat
Dilution :	WB 1:5000-20000, ELISA 1:10000-20000, IHC 1:500-1000 IF 1:500-2000
Purification :	The antibody was affinity-purified from goat antiserum by affinity-chromatography using epitope-specific immunogen.
Concentration :	4 mg/ml
Storage Stability :	-20° C/1 year
Background :	IMMblot secondary antibodies are available conjugated to enzyme, biotin or fluorophore for use in a variety of antibody-based applications including Western Blot, ImmunoHistoChemistry, ImmunoFluorescence, Flow Cytometry and ELISA. We offer high quality secondary antibodies from goat, rabbit and donkey sources for your each application. Serum adsorbed secondary antibodies are also available and are recommended for use with immunoglobulin-rich samples.
Tag :	hot
Sort :	269
No4 :	1

Products Images:



Zhang, Zi-Bin, et al. "miRNA-7a-2-3p Inhibits Neuronal Apoptosis in Oxygen-Glucose Deprivation (OGD) Model." *Frontiers in neuroscience* 13 (2019).